

THE COMMUNICATOR

people OF hope

BY LINDSEY HIEMSTRA



"It is winter in Narnia," said Mr. Tumnus, "and has been for ever so long... always winter, but never Christmas."

I'm often reminded of this line from *The Lion, the Witch and the Wardrobe* during the cold, short days of February. It's been over a month since the festivities of Christmas and it will be even longer until the warmth and new life of spring are here. The cold, grey days can begin to wear us down and while the February holidays give us reasons to celebrate, they can also bring painful reminders of the brokenness and "winter" still felt by our world.

As Narnia awaited Aslan's return to restore his kingdom, we still await

the return of our Saviour and King to restore His creation. Jesus has already come to our wintry world as a baby and defeated death on the cross but He has not yet come again to make everything new. We can grieve the brokenness still present in this "already but not yet" season of Christ's coming, but we grieve as people with hope. We have the hope of the future restoration of creation and the knowledge that God loves us so much that He came down to be with us. He wants us to draw near to Him now and He wants to be with us when creation is renewed. We pray our children know the love of God and we celebrate when we have families and a Christian school community that can surround them with this knowledge.

The bright sunshine that makes fresh snowflakes glitter and sparkle on the coldest days and the red hues of sunlight coming up over the horizon in February give us some of the most spectacular winter scenes. God's love is like that. It shines bright even in the darkest, coldest places. The greatest gift of love we received

was the love of Christ laying down his life for us, adopting us into God's family as his children and with Christ, the co-heirs of God's glory (Romans 8:17). In the words of Christian band, Reliant K: "It's always winter, but never Christmas. It seems this curse just can't be lifted, but in the midst of all the ice and snow our hearts stay warm 'cause they are filled with hope".




Listowel
CHRISTIAN SCHOOL



The artwork featured in this issue has been submitted by the Junior and Senior Kindergarten classes.



TOP: Grade 7/8 having some outside fun.

MIDDLE: Pizza delivery with a smile!

BOTTOM: School skating was a success.



FAMILY - A BEAUTIFUL THING

When God created Adam and Eve, he created human kind to be together. Through their relationship, the concept of a family evolved. Today we enjoy family as we know it: great grandparents, grand parents, parents, and children, uncles, aunts and cousins, not to mention even more extended relationships. If we extend the relationships far enough, LCS students can be a part of three families: their biological family, their classroom family and their spiritual family. All of these family relationships are a gift from God.

Each student is your child. What a blessing to have families in LCS that provide stable environments for their children. Most mornings we know that our students awake in the comfort of their home, are provided food at the beginning of their day, are well clothed and prepared for a variety of weather and are sent to school with love. The stability the beginning of their day provides them is invaluable as the day moves along. We also know that they are excited to return to their homes to share their day's experiences with their families. What a blessing.

Each student is our child. Their classroom family is a bit different. Our unique role is to educate them and we do that by creating a caring, loving environment - a family environment. We seek to fully know each child, what their interests are

and what their challenges are. We listen to their stories, encourage them in their growth, challenge them in their learning, and love them like their parents love them. We hope and pray that each child feels equally loved and cared for in their classroom family as they do in your family.

Each student is God's child. As parents and teachers, we also recognize that we are raising God's children. We both strive to teach them about their father and encourage them to grow in their relationship with him. We pray that they will feel the love of their heavenly father and also understand their role in His family.

Sometimes family relationships are difficult. Because we value family, in January 2020 our staff began praying for our LCS families during our staff devotions. Every day we pray for a new specific family. By the time you read this, we will be almost completing the list. It has been very good for us to bring each family before God, pray for each child and parent and all the relationships, hardships, and celebrations within their family.

Families are a beautiful thing. Let's continue to pray that God will bless each of us as we train these children to grow within their biological families, their educational families, and their spiritual families.



DEREK



COLIN



DREW



FIANNA

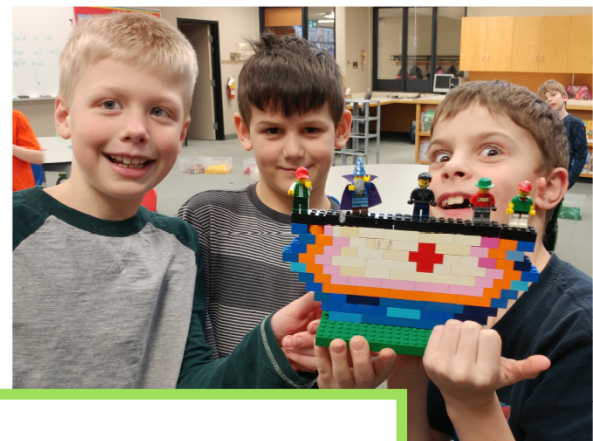


HOCKEY TOURNAMENT



The LCS hockey team played in our tournament on Thursday January 30. We didn't go home with any bragging rights but for sure we went home with happy hearts and good spirits. That's what I liked about the team, we were always encouraging whether we got the first goal or if we were down a ton. Another thing I liked about the team was that we gave it our all, whether it was the first puck drop or the final rush. Our team improved throughout the day and came in a solid 7th place with a total of 1 win and 10 goals. On our breaks we also were a team, we worked together, played together, but most of all, we had an awesome day together. As a team we'd like to thank the four different goalies that played for us, the coaches that gave their own time and knowledge, and all the parents, grandparents, and other fans for encouraging us. Overall it was a fun day with lots of hockey, excitement, and laughter.

(Written by Craig Elisen)



LEGO CLUB

Getting creative at Lego Club!



HARRISON



HENRY



MARCUS



MONIQUE

BOARD REPORT

CHERYL MULDER
BOARD SECRETARY

There have already been a few staff changes since September due to a maternity leave and a family move. The Education/HR committee conducted interviews and recommended applicants to the board to fill the positions of Music teacher and an Educational Assistant. We welcome Julia Duiella Boekestyn and Mariette Mulder to Listowel Christian School.

The Fall Membership meeting was well attended by 44 member families. The main focus of the fall meeting is the presentation of the *Independent Practitioner's Review Engagement Report*, more commonly recognized as the year-end financial statements for the 2018-2019 school year. As a federally recognized charitable organization the board of LCS has a legal responsibility to present these documents, and invite our membership's response at an annual meeting. We appreciate those members who come out and invite discussion over the financial matters of Listowel Christian School. The LCS Strategic Plan Coordinator, Lauren Koersen, also presented the highlights of the *Year 14 Strategic Plan*. Three areas are being focused on this year:

volunteer management, special education review and fund raising strategy review. An opportunity for families and other members to give input into the direction of future strategic plans will be available at a later date. Watch for details for your chance to contribute.

Ralph Bakker, board member and representative to the *Christian School Foundation*, presented to the board at our December meeting. We received the organization's annual report and he highlighted the impact at LCS of the CSF Bursary program.

Regular board meetings include a review of the latest month's operating statement to keep the board apprised of the financial situation of the school. As well, one board member is assigned each month to complete a monthly meeting evaluation; as these are completed they can identify trends in the effectiveness of board meetings. The board is also in the process of completing an annual, board of directors evaluation of the principal/COO. Much less intense than the recent evaluation that invited responses from staff and parents, this five-page form allows the board to encourage our principal in his ongoing work at LCS.

As board members we look forward to an upcoming social evening with staff and all spouses at a local bowling lane. This annual social is a great chance to get to know one another in a more casual way, building the relationships that make Listowel Christian School a great place to work and to serve.

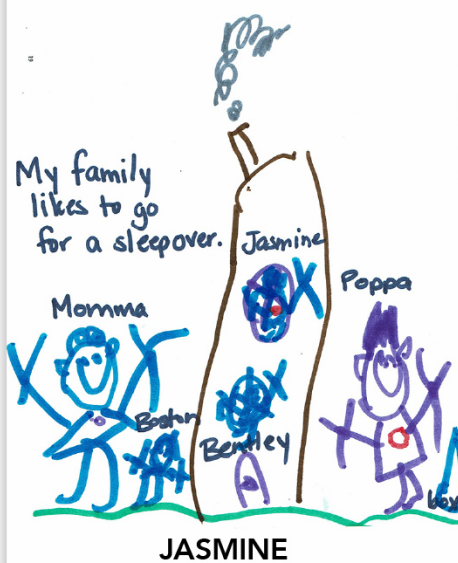




SNOW BUILDING



ABOVE: Challenged to build tall snow structures at a school-wide team event.
BELOW: Grade 7/8 students work together to share the story of the Hobbit.



STORY MAPS





funDRAISING @ LCS

Spring AUCTION

**FRIDAY
APRIL 3, 2020**

6:00 pm - Dinner & Silent
Auction Begins

7:30 pm - Live Auction Begins

Come on out,
savour the **Food**,
enjoy the **Fellowship**
and join in the **Bidding**!

We look forward to seeing you
at the Spring Auction!



ANNUAL golf tournament

**SATURDAY
JUNE 13, 2020**

at **Pike Lake
Golf Centre**

More info coming soon!!

Save
THE
Date!

Thank You!

We praise God for giving us such a great day at the Bazaar that was held in November! Thank you to everyone who gave of their time, goods and talents! We have wonderful giving people in our school, churches and surrounding community. We have been blessed and we are happy to report a profit of **\$24,505.63!**

The LCS Bazaar Committee

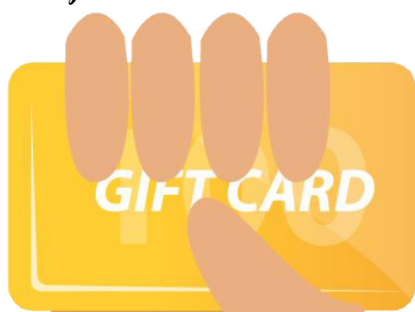
FundScrip gift card ORDER

Register at
www.fundscrip.com

We've got so many participating retailers that you will easily find one or several you can use for daily expenses and for those special occasions.

If you would like a paper order form or would like to know more, please email giftcardprogramlcs@gmail.com or call Janel Hiemstra at 519-749-5263.

Spread the word!



FundScrip

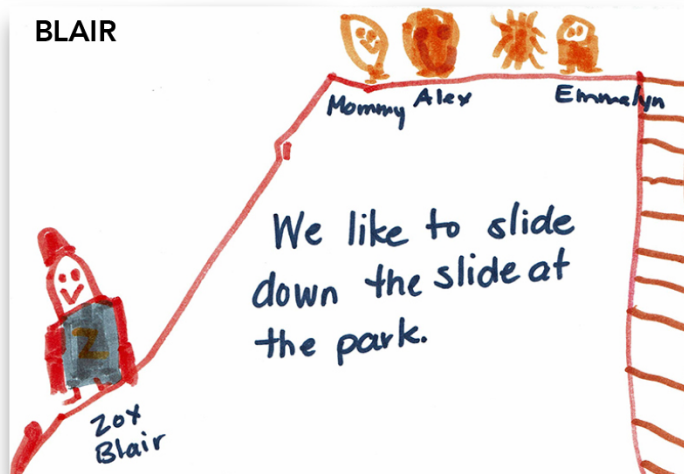


OWEN



We like to play outside together

BLAIR





Grade 7 and 8 trying out their ukuleles.
The newest instrument for our music program.

PURPOSE STATEMENT

EDUCATING
CHILDREN

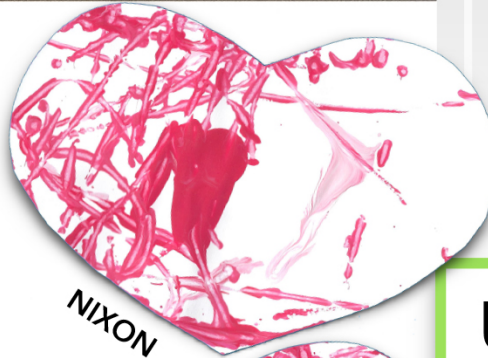
*while nurturing
faith in Christ*

TO INTERPRET AND
IMPACT GOD'S WORLD

We like to play outside and do other stuff.



GERRIT



NIXON



NOAH



SKYLAR



ZION



UPCOMING EVENTS

Fri. Feb. 14	PA Day (no school)
Mon. Feb. 17	Family Day (no school)
Fri. Feb. 28	Basketball Tournament
Sat. Mar. 7	LCS Information Morning
March 16 - 20	March Break (no school)
Fri. Apr. 3	LCS Spring Auction
Fri. Apr. 10	Good Friday (no school)
Mon. Apr. 13	Easter Monday (no school)
May 4 - 8	Christian Education Week
Thurs. May 7	Grandparents & Grandfriends Day
Fri. May 15	LCS Track & Field Day



Listowel
CHRISTIAN SCHOOL